

# 2130 HIGH-OUTPUT BROADCAST SPREADER ASSEMBLY and OPERATING INSTRUCTIONS

**EarthWay**  
HIGH-OUTPUT

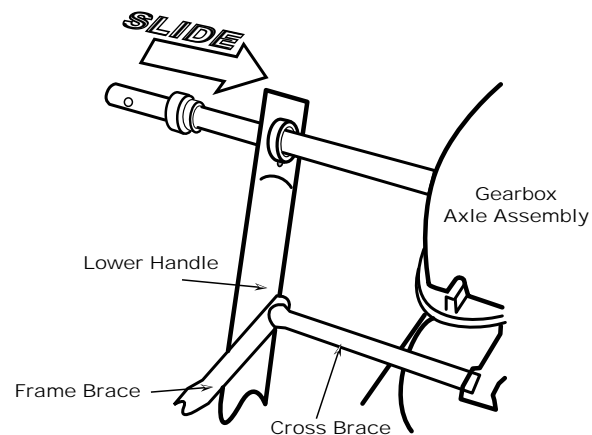
Congratulations on the purchase of this new EarthWay spreader. Please call us if you have any difficulty with assembly or operation of this spreader. We can be reached via the telephone at 800-294-0671 or 574-848-7491 Monday—Friday 9:00am ~ 4:00pm or visit us online at [www.earthway.com](http://www.earthway.com) This spreader comes with lifetime technical support, email: [techsupport@earthway.com](mailto:techsupport@earthway.com)

## HELPFUL HINTS: READ THE DIRECTIONS BEFORE ASSEMBLY

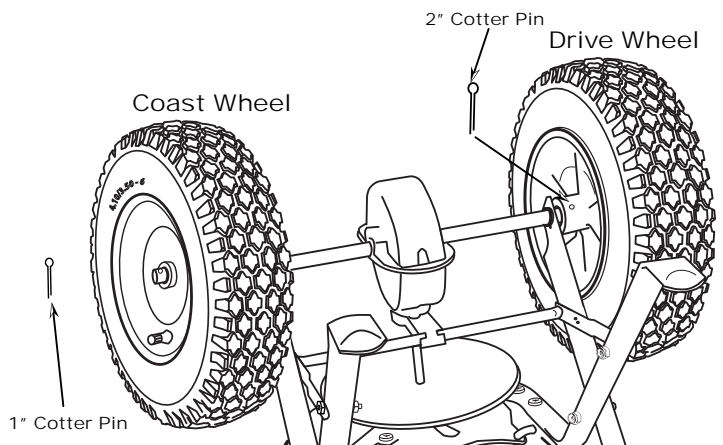
THIS SPREADER COMES PARTIALLY ASSEMBLED, REQUIRING YOU TO INSTALL THE WHEELS, HANDLE ASSEMBLY AND CONTROL ROD. IT SHOULD TAKE APPROXIMATELY 10 MINUTES WITH THE USE OF TWO 7/16" WRENCHES AND 1 PAIR OF PLIERS.

- ✓ Clean the impeller plate after each use. Material stuck on the impeller blades will cause uneven spreading.
- ✓ Your spreader is designed to be pushed at three miles per hour, which is a brisk walking speed. Slower or faster speeds will change the spread patterns. Wet material will also change the spread pattern and flow rate.
- ✓ Clean your spreader thoroughly after each use. Wash between the shut off plate and bottom of the hopper.
- ✓ Gears are permanently lubricated at the factory. Do not open the gearbox or dirt may enter.
- ✓ When using Rock Salt remove the agitator to prevent damage to the gearbox and remove salt from the hopper daily. Rock Salt will reconstitute back into a solid block over night with humidity.

1. Open carton and remove the handle assembly, wheels, and spreader from carton.
2. Turn spreader upside-down on to the hopper.

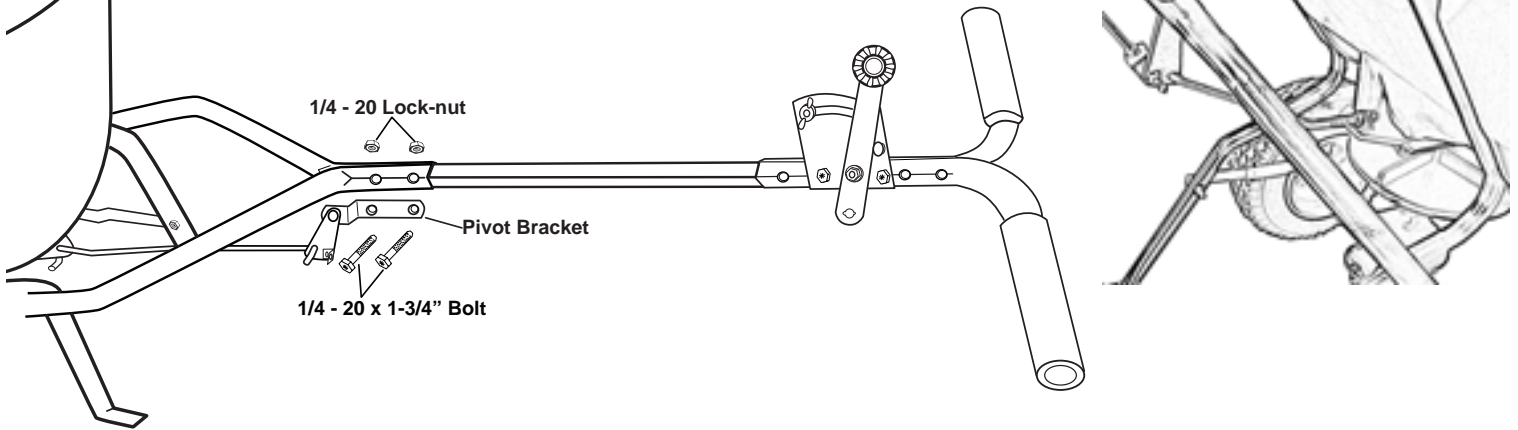


3. Ensure that the axle bearings are pushed into the axle bushing on both sides as shown. Install drive wheel (both wheels are interchangeable) to axle using pin hole nearest to lower handles as shown. Insert 2" cotter pin through wheel and through axle. Bend with pliers to prevent pin from falling out.



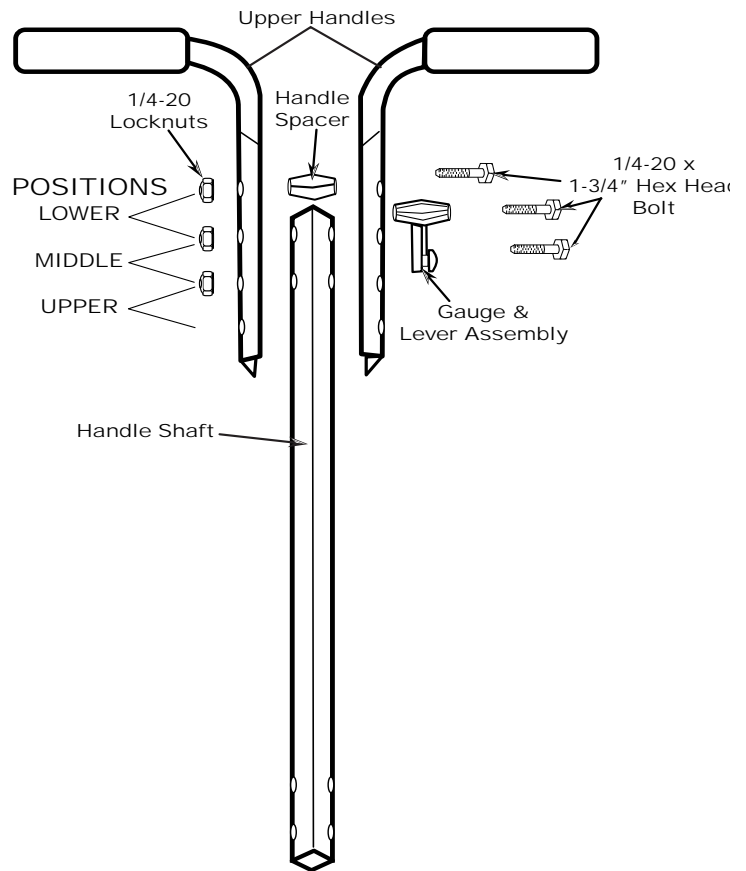
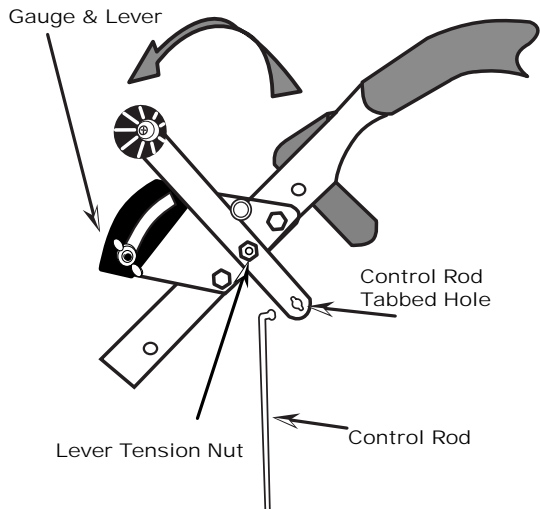
4. Install coast wheel to axle, then using outside pin hole as shown, insert 1" cotter pin through axle (not thru the wheel). Bend with pliers to prevent pin from falling out.

5. Install handle shaft to lower handles and pivot & bracket assembly as shown. Using 2" bolts and locknuts.  
**TIGHTEN BOLTS AND NUTS NOW.**



6. (This step is only required if you want to change the position of the handles) **NOTE:** Upper handles have 3-positions that you can adjust for operator comfort. If operator chooses middle or upper positions, use handle spacer in hole nearest to handle grips. Insert 1 3/4" bolt through upper handle, then through handle spacer and then through other upper handle. **DO NOT TIGHTEN LOCKNUT YET. TIGHTEN THIS NUT LAST.** Install gauge & lever using (2) 1 3/4" bolts. Be sure gauge is on left hand side. Tighten locknuts to gauge first.

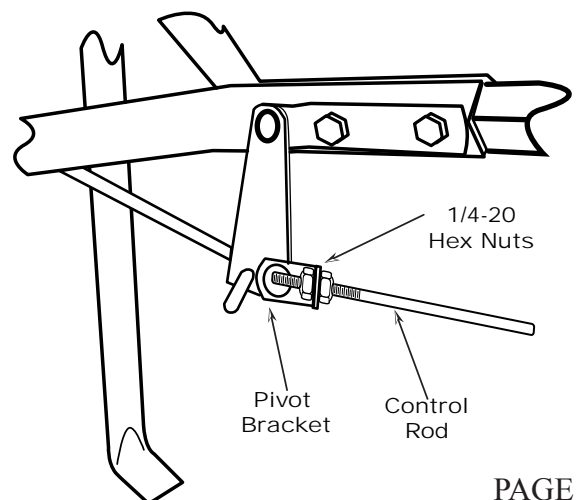
**TIGHTEN NOW.**



7. Install Control Rod by installing flattened end of Control Rod into Lever on Gauge as shown. Turn to lock in place. {Make sure that there is a plain 1/4-20 Hex Nut threaded about halfway up the threads}

Push lever forward to full OPEN setting. Align and push the Control Rod through the angle attached to the Pivot Bracket. Now install 1/4-20 regular nut on to control rod. {One nut on either side of the angled plate}

Next pull pivot & bracket back so that the shut off plate in the hopper is in the full open position and adjust the Hex Nuts on the Pivot Bracket angle to secure the angled bracket. Now tighten the nuts against the pivot angled bracket to prevent change in calibration.



**5-YEAR LIMITED WARRANTY**

**EarthWay** Products, Inc. warrants this product free of defects in original workmanship and materials for a period of 5-Years to the end user with the original purchase receipt. If a manufacturing non-conformance is found, **EarthWay** Products, Inc. at its discretion will repair or replace the part(s) or product at no charge provided the failure is not the result of incorrect installation, mishandling, misuse, tampering, or normal wear and tear as determined by **EarthWay**. **EarthWay** at its discretion may require that the part(s) or product be returned along with the original purchase receipt at owners' expense for examination and compliance with the terms of this warranty. (Do not return any product without first receiving authorization from **EarthWay** Products, Inc.). To seek remedy under this warranty, contact **EarthWay** Products, Inc. at 574-848-7491, techsupport@earthway.com or write to (**EarthWay** Products, Inc. P.O. Box 547 Bristol, Indiana 46507) and describe the nature of the manufacturing defect. SPECIFIC LIMITATIONS: This warranty covers only the part(s) or product; any labor charges associated with repair or replacement of non-conformances are specifically excluded. Due to the corrosive nature of most fertilizers and ice melt products, **EarthWay** Products, Inc. makes no warranty against and specifically excludes part(s) or product degradation or failure due to corrosion or its effects. Clean and dry your spreader thoroughly after each use, as a preventative measure, coat all metal parts with a light oil or silicon spray.

**HOW TO ORDER SPARE PARTS**

All spare parts listed herein may be ordered direct from the manufacturer. Be sure to give the following information when ordering.

- ◀ Model Number
- ◀ Part Number
- ◀ Part Description

Call (574) 848-7491 or 800-294-0671 to place an order with a credit card.

**OPERATING INSTRUCTIONS**

Before filling hopper, become familiar with the operation of this spreader.

- Move stop bolt on gauge assembly to the proper position for the material being applied.
- While pushing spreader forward, push control lever forward to stop bolt.
- To stop, pull lever backward to close flow hole before you stop moving.
- When finished, empty any remaining material from hopper.
- Thoroughly wash and dry your spreader before storing.

**DO NOT RETURN TO DEALER FOR REPAIR**

**EARTHWAY PRODUCTS, INC.**

1009 Maple Street  
P.O. Box 547  
Bristol, IN 46507

**FOR YOUR RECORDS**

\_\_\_\_\_
Date Purchased

\_\_\_\_\_
Store Name

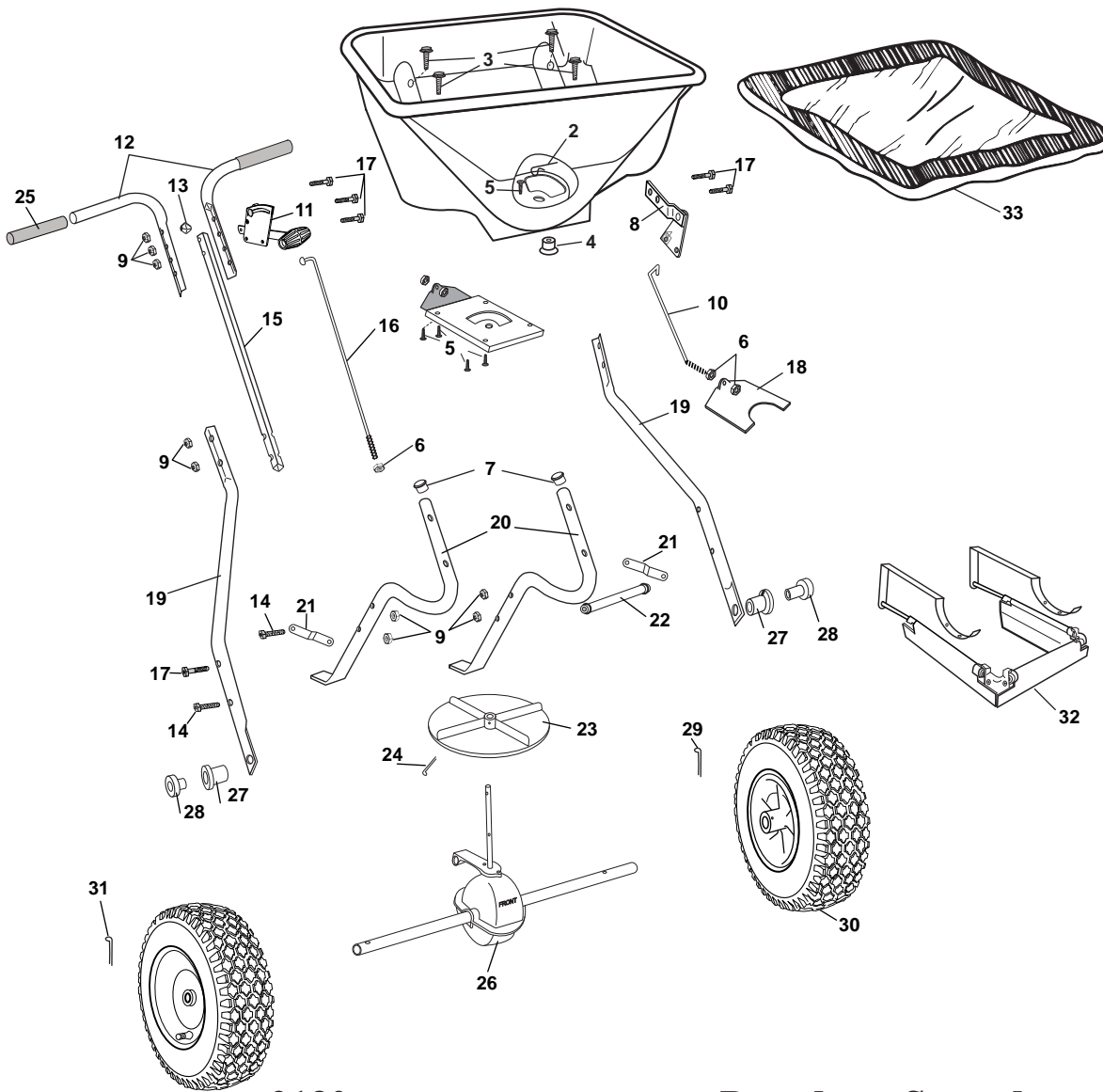
EarthWay Products, Inc.

P.O. Box 547

Bristol, IN 46507

Phone: 800-294-0671

www.earthway.com



## 2130 HIGH-OUTPUT Broadcast Spreader ~ Parts List

Key #	Part #	Description	Key #	Part #	Description
1	60250	Hopper Assembly, Includes Key #4, #5 & 18	18	12354	Shut-Off Plate
2	33117	Agitator	19	25222	Lower Handle Square
3	31141	#14 X 3/4" Type AB	20	25722	Frame
4	12209	Hopper Bushing	21	44292	Frame Brace
5	31122	#8 X 5/8" Type A Screw	22	25228	Cross Brace
6	32100	1/4-20 Hex Nut	23	12109	Impeller
7	19132	7/8" Tube Plug	24	36105	1/8" X 1-1/4" Cotter Pin
8	60300	Pivot & Bracket Assembly	25	12274	Handle Grip
9	32103	1/4-20 Lock Nut	26	60334	Gear Box & Axle Assembly
10	44259	Pivot Rod	27	12148	Axle Bearing
11	60499	Gauge & Lever Assembly	28	12152	Axle Bushing
12	60175	Upper Handle, Includes Grip	29	33109	3/16" X 2" Cotter Pin
13	12291	Handle Spacer	30	70138	Drive Wheel/Coast Wheel
14	31121	1/4-20 X 1-1/4" Bolt	31	33108	3/16" X 1" Cotter Pin
15	25223	Handle Shaft	32	60184	Optional Salt Deflector Kit
16	42256	Control Rod	33	77003	Optional Heavy Duty Rain Cover
17	31114	1/4-20 X 1-3/4" Bolt			