

C24HD BROADCAST SPREADER

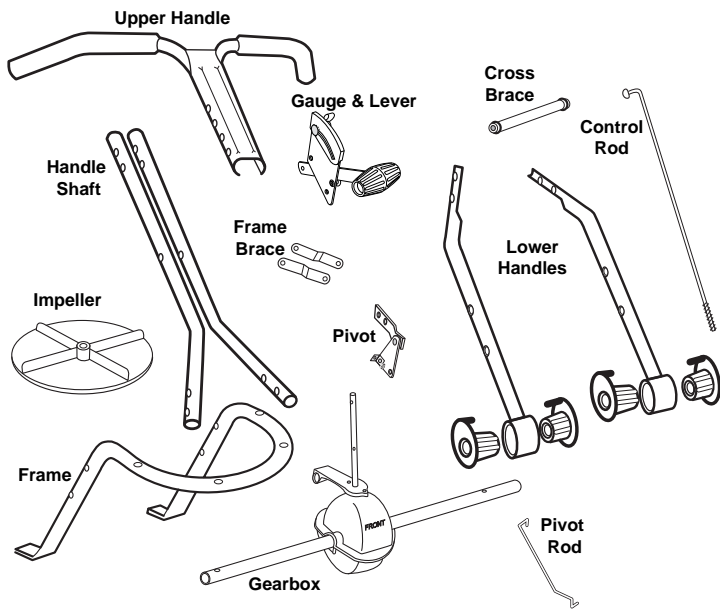
ASSEMBLY and OPERATING INSTRUCTIONS Rev 1.09



PLEASE CALL IF YOU ARE MISSING ANY PARTS, HAVE ANY DIFFICULTY IN ASSEMBLY, OR HAVE ANY QUESTIONS REGARDING THE SAFE OPERATION OF THIS SPREADER. THIS MODEL INCLUDES LIFETIME TECHNICAL SUPPORT SUPPORT HOT LINE: 574-848-7491 or 800-294-0671, email: techsupport@earthway.com

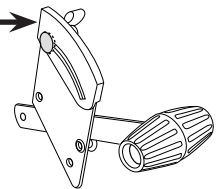
HELPFUL HINTS:

- ☑ If your spreader does not spread evenly, be sure the FRONT on the gear box points to the front of the spreader. The impeller must turn clockwise. Reversing the gearbox will cause the impeller to turn counter clockwise. Clean the impeller after each use as some fertilizer may become stuck on the impeller blades and will cause uneven spreading.
- ☑ Your spreader is designed to be pushed at three miles per hour, which is a brisk walking speed. Slower or faster speeds will change the spread patterns. Wet fertilizer will also change the spread pattern and flow rate. Clean and dry your spreader thoroughly after each use. Wash between the shut off plate and bottom of the hopper.
- ☑ Gears are permanently lubricated at the factory. Do not open the gearbox or dirt may enter.
- ☑ If you must use **Rock Salt** remove the agitator to prevent damage to the gearbox and remove salt from the hopper daily. **Rock Salt** will reconstitute back into a solid block over night with humidity and will damage your spreader.



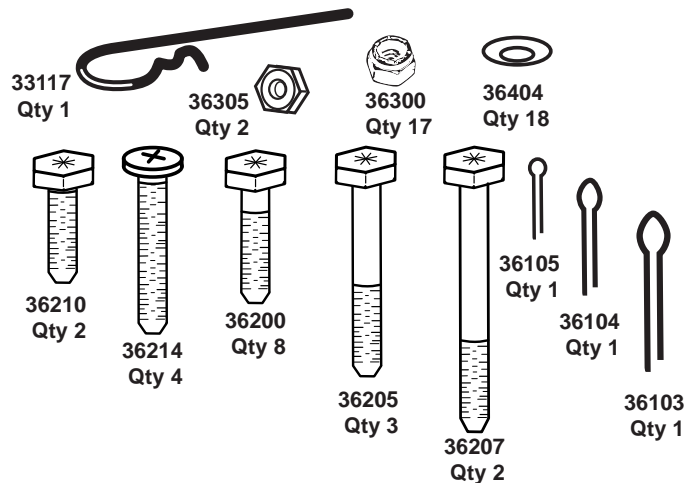
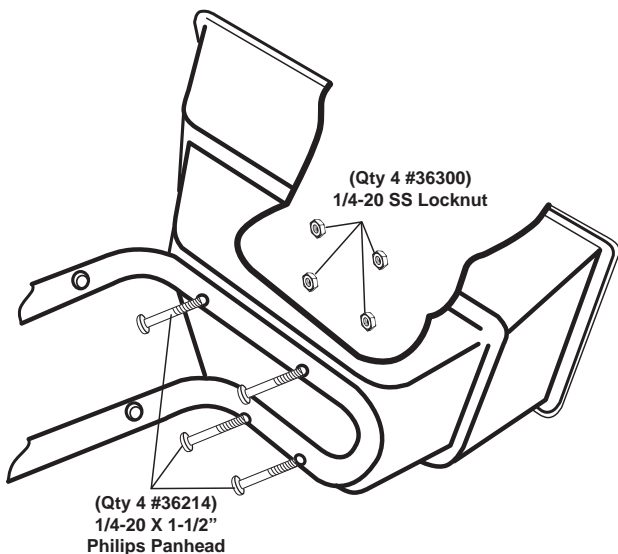
WARNING
Do NOT USE AIR TOOLS TO ASSEMBLE. TO PREVENT SEIZING SPRAY ALL NUTS & BOLTS WITH FURNITURE POLISH OR WAX

Gauge Overlay is snapped over the metal gauge. Replace the stop bolt assembly to secure overlay on the gauge.

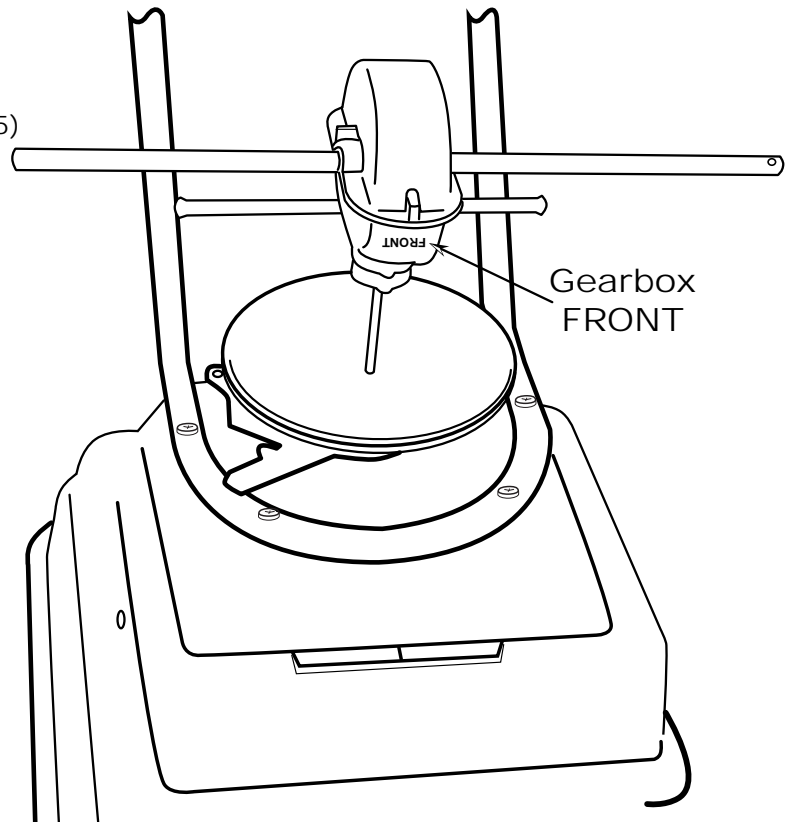
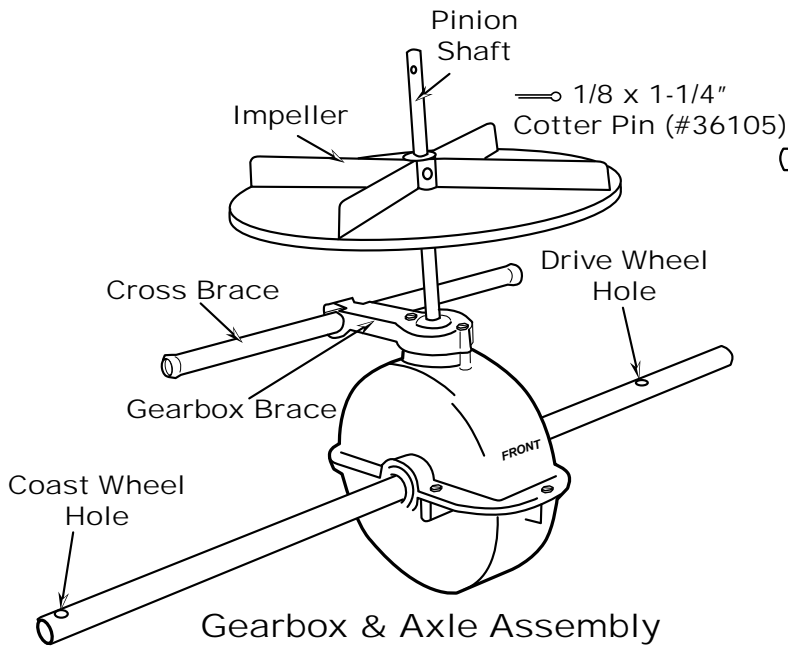


ROCK SALT IS NOT RECOMMENDED FOR USE IN THIS SPREADER. REMOVE AGITATOR WHEN USING ICE MELT.

1. Remove and identify all of the loose parts from carton.

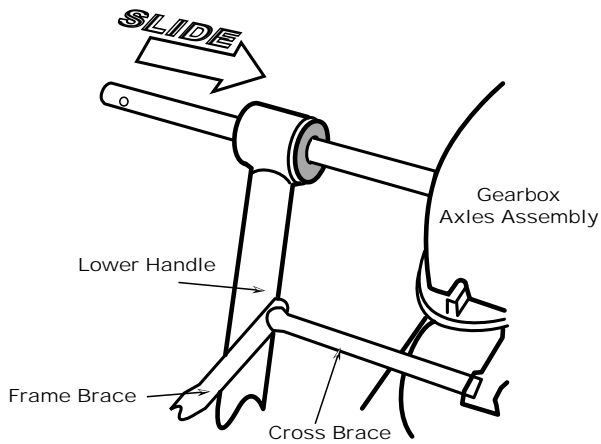


2. Position hopper on side. Install frame using (4) 1/4-20 x 1-1/2" Pan Head Philips bolts and (4) 1/4-20 nylon insert locknuts. First put bolts through holes in frame then through holes in bottom of hopper. Secure with locknuts. **TIGHTEN THESE LOCKNUTS NOW.**



3. Install impeller onto pinion shaft. Insert 1/8" x 1-1/4" cotter pin through impeller then through pinion shaft. Use hole nearest gear box. Spread cotter pin to prevent from falling out. **Next**, install the Cross Brace through the Gearbox Brace Support as shown above.

4. Install Gearbox by inserting the pinion shaft into hole in center of hoppers bottom. The word "FRONT" on the gearbox must point to FRONT of the hopper.



5. Install Lower Handles onto Axle to both sides as shown above.

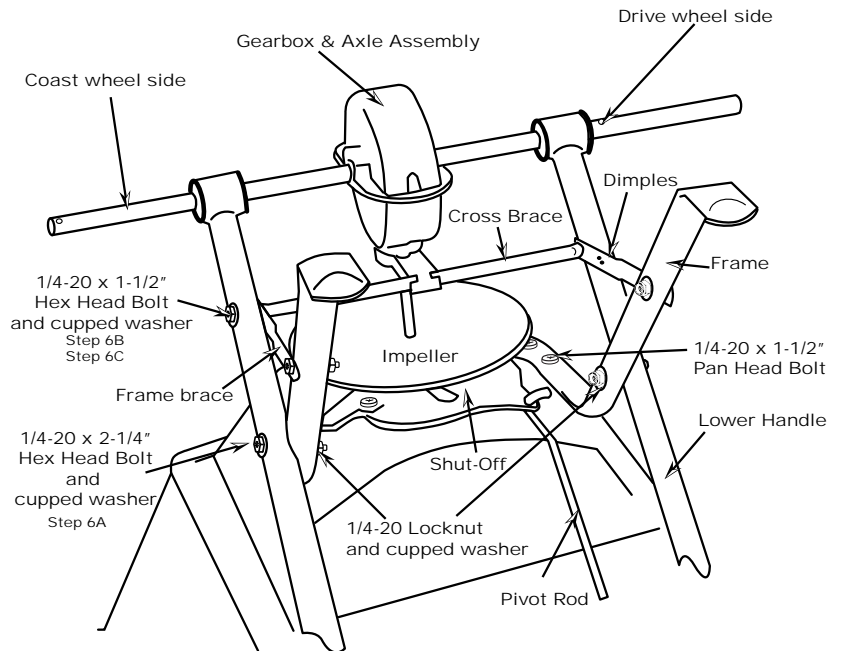
6. A. Now insert 2-1/4" bolt with a cupped washer through second hole in lower handle and through first hole in frame, secure with cupped washer and locknut.

B. Now insert 1-1/2" bolt with a cupped washer through first hole in lower handle, then through frame brace, and finally into the threaded connector in the Cross Brace.

[NOTE: Dimples on frame braces must be facing toward gearbox as shown.] **DO NOT TIGHTEN YET.**

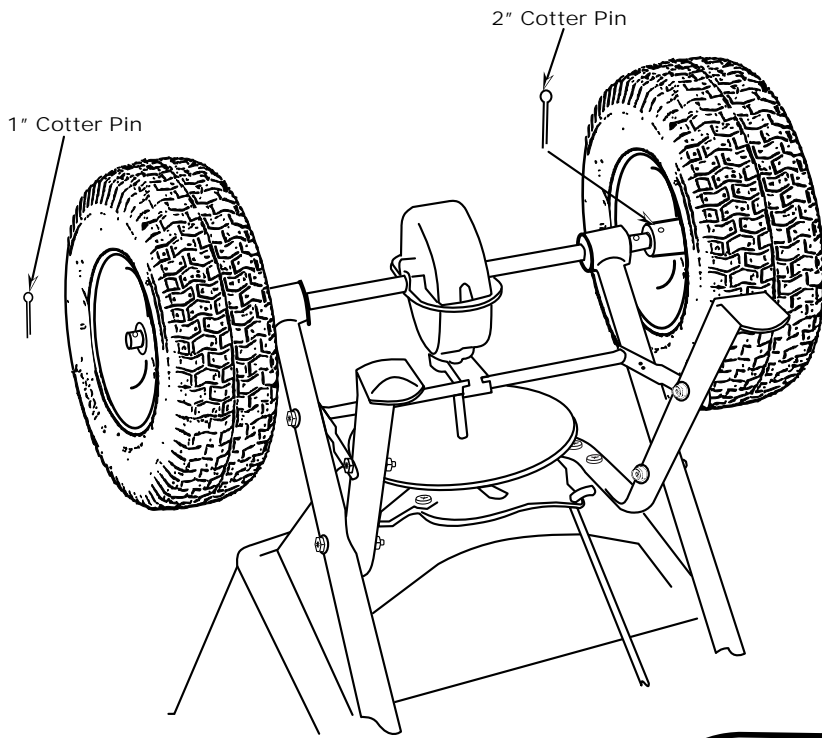
C. Next insert 1-1/2" bolt through other end of frame brace and through second hole in frame install cupped washer and locknut.

DO NOT TIGHTEN YET.



~~NOTICE CUPPED WASHER LOCATIONS~~

NOW GO BACK AND TIGHTEN ALL NUTS AND BOLTS STARTING WITH FIRST STEP. DO NOT OVER TIGHTEN.



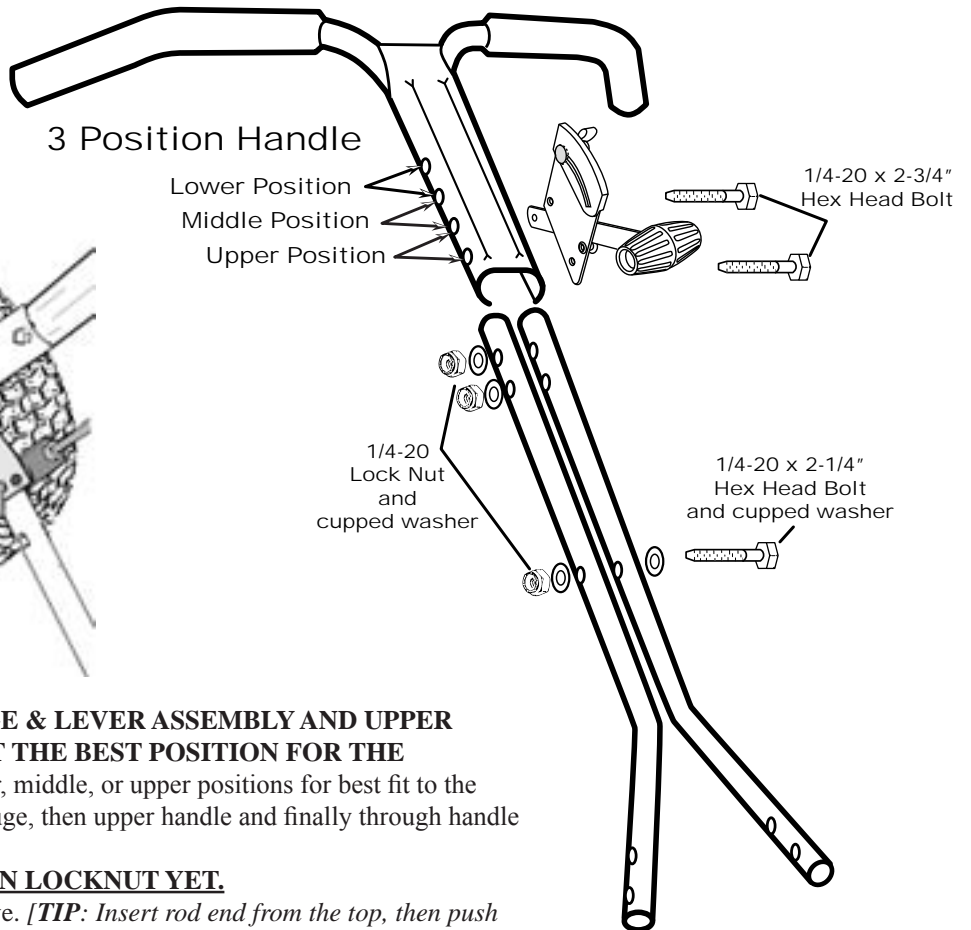
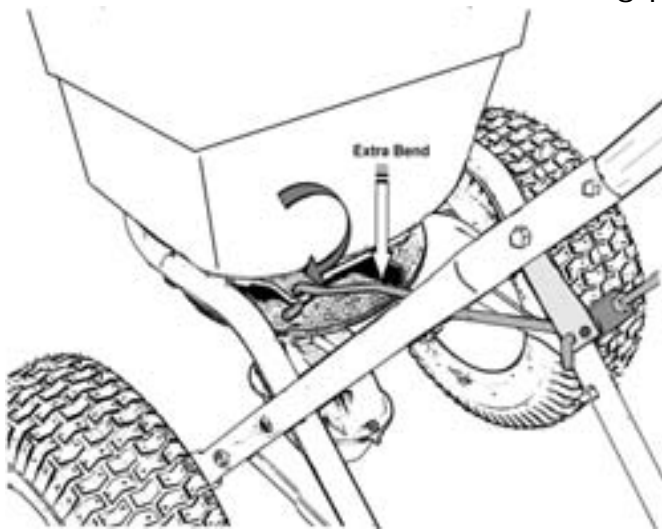
7. Install drive wheel to axle using pin hole nearest to lower handles as shown. Insert 2" cotter pin through wheel and through axle. Bend with pliers to prevent pin from falling out.

NEXT

Install coast wheel to axle, and then using outside pin hole on the axle (as shown on the left), insert 1" cotter pin through axle [NOTE: not thru the wheel]. Bend with pliers to prevent pin from falling out.

TURN SPREADER UPRIGHT ON TO WHEELS

**If you have any questions
please call 574-848-7491**

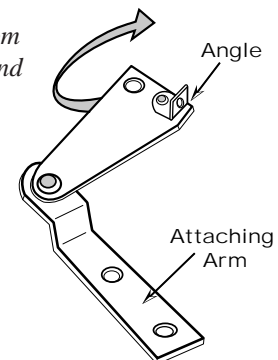


8. NOTE: BEFORE INSTALLING THE GAUGE & LEVER ASSEMBLY AND UPPER HANDLE TO THE HANDLE SHAFT, SELECT THE BEST POSITION FOR THE OPERATOR'S COMFORT. You can select lower, middle, or upper positions for best fit to the operator's height. Insert 2-3/4" bolt through the Gauge, then upper handle and finally through handle shaft. See example to the right.

DO NOT TIGHTEN LOCKNUT YET.

9. Insert pivot rod into shut off plate as shown above. [TIP: Insert rod end from the top, then push down & turn to lock in place.]

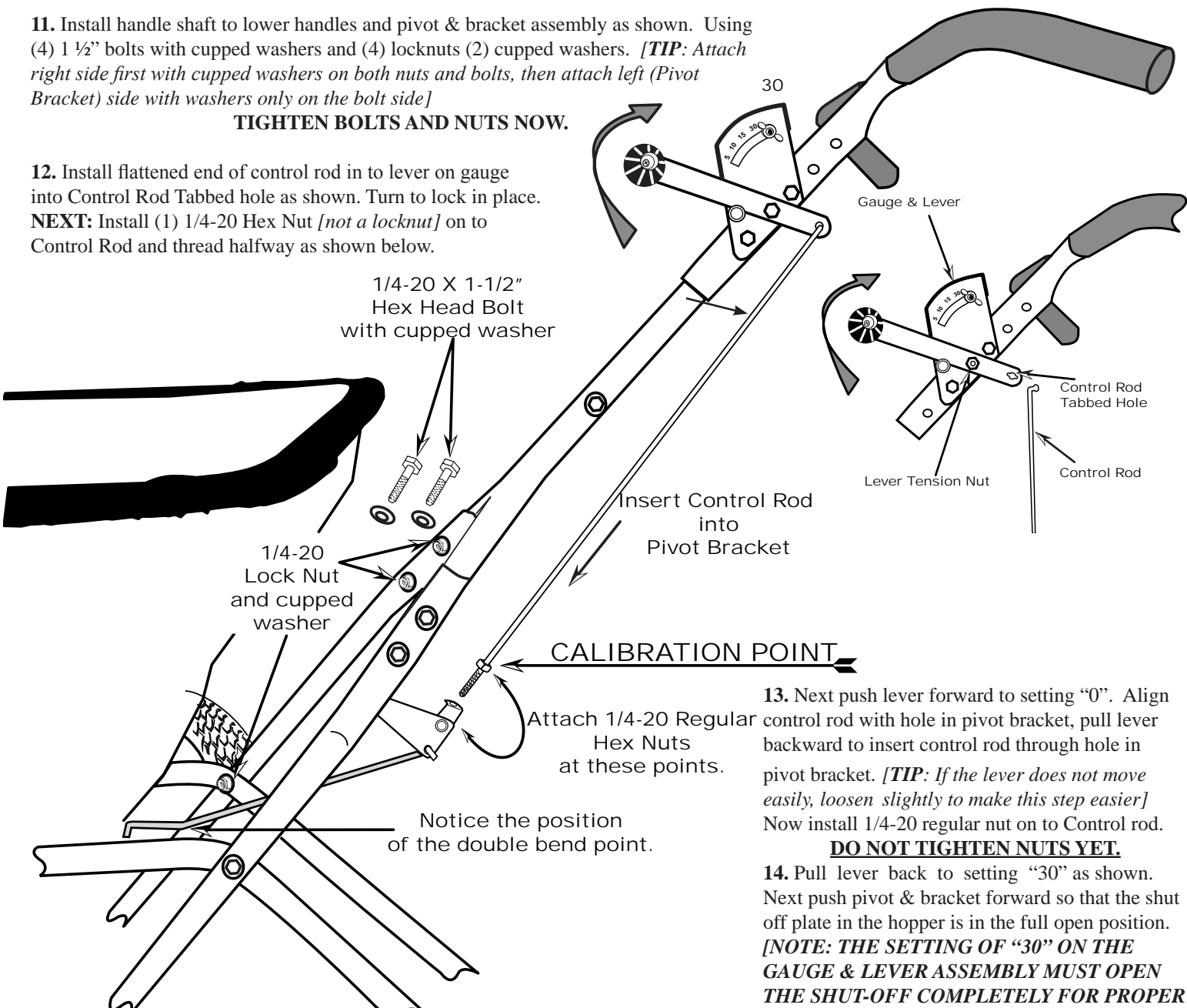
10. Insert other end of pivot rod into pivot and bracket assembly as shown. [TIP: Insert rod end from the side that has the angle attached to the bracket, then turn to lock in place as shown at the right and above. The correct positioning of the Pivot Bracket has the Angle and Attaching Arm facing away from the gearbox.]



11. Install handle shaft to lower handles and pivot & bracket assembly as shown. Using (4) 1 1/2" bolts with cupped washers and (4) locknuts (2) cupped washers. [TIP: Attach right side first with cupped washers on both nuts and bolts, then attach left (Pivot Bracket) side with washers only on the bolt side]

TIGHTEN BOLTS AND NUTS NOW.

12. Install flattened end of control rod in to lever on gauge into Control Rod Tabbed hole as shown. Turn to lock in place. NEXT: Install (1) 1/4-20 Hex Nut [not a locknut] on to Control Rod and thread halfway as shown below.



1/4-20 X 1-1/2" Hex Head Bolt with cupped washer

1/4-20 Lock Nut and cupped washer

Attach 1/4-20 Regular Hex Nuts at these points.

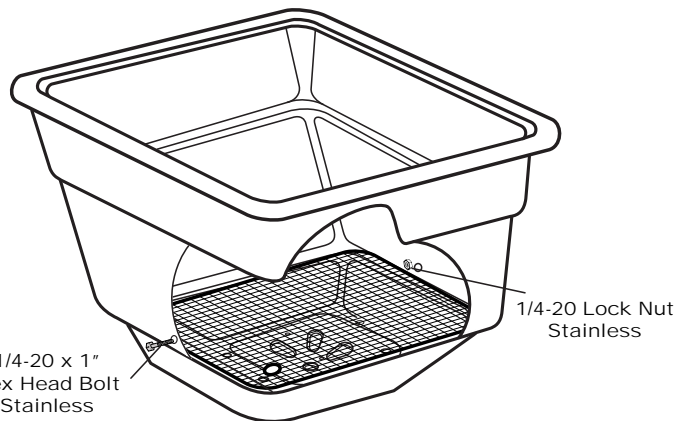
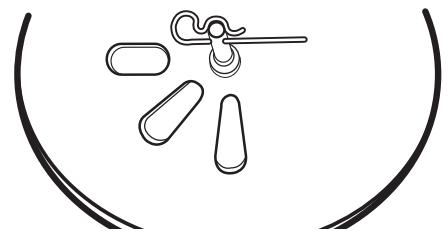
Notice the position of the double bend point.

13. Next push lever forward to setting "0". Align control rod with hole in pivot bracket, pull lever backward to insert control rod through hole in pivot bracket. [TIP: If the lever does not move easily, loosen slightly to make this step easier] Now install 1/4-20 regular nut on to Control rod.

DO NOT TIGHTEN NUTS YET.

14. Pull lever back to setting "30" as shown. Next push pivot & bracket forward so that the shut off plate in the hopper is in the full open position. [NOTE: THE SETTING OF "30" ON THE GAUGE & LEVER ASSEMBLY MUST OPEN THE SHUT-OFF COMPLETELY FOR PROPER CALIBRATION.] Now tighten the nuts against the pivot bracket to prevent change in calibration. Test by opening and closing the Gauge & Lever a few times to ensure an accurate calibration.

15. Tension on the flow control lever may be adjusted by tightening or loosening the tension nut as shown above.

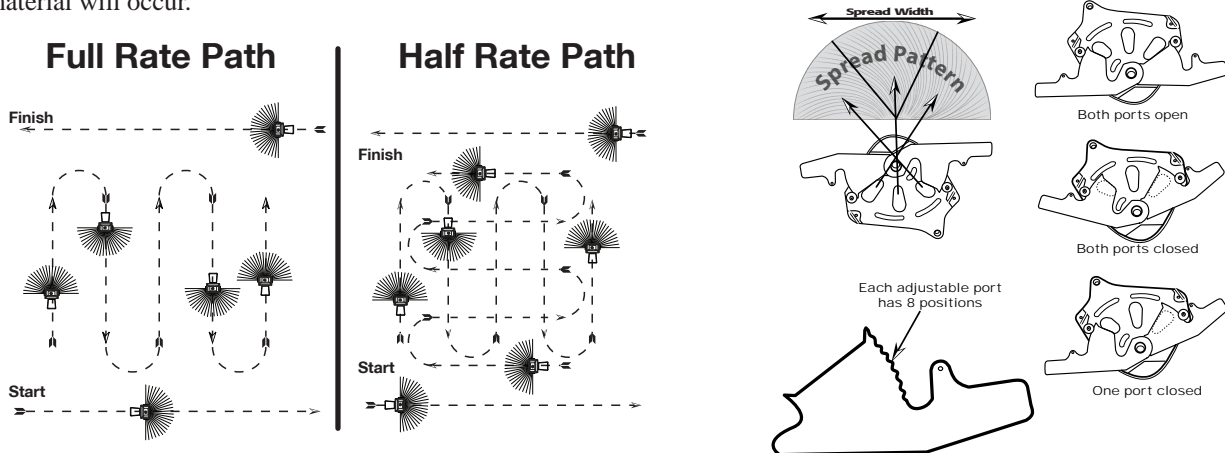


17. Install the two 1/4-20 x 1" Stainless Steel bolts into holes located on each side of the hopper and secure with 1/4-20 lock-nut. Next slide Debris Screen under the two bolts inside the hopper.

16. Insert Agitator to pinion shaft on inside of hopper. NOTE: Position of flat side of agitator. This pin should be installed as shown above.

18. For normal operation both doors should be fully opened. To reduce flow to the left side, partially or completely close the door over the rear (**LARGE**) hole. To reduce flow to the right side, partially or completely close the door over the front (**SMALL**) hole. Close both doors for a narrow center spread pattern.

WARNING: If the optional side deflector is being used in the down position, the plate over the rear (**LARGE**) hole **MUST BE CLOSED** or an over application of material will occur.



The settings furnished on the Setting Matrix are intended as a guide only. Variations in physical characteristics of material applied, walking speed, and roughness of ground surface may require slightly different spreader settings. Due to these conditions, EPI makes no warranty as to the uniformity of coverage actually obtained from the settings listed.

5-YEAR LIMITED WARRANTY

EarthWay Products, Inc. warrants this product free of defects in original workmanship and materials for a period of 5-Years to the end user with the original purchase receipt. If a manufacturing non-conformance is found, **EarthWay** Products, Inc. at its discretion will repair or replace the part(s) or product at no charge provided the failure is not the result of incorrect installation, mishandling, misuse, tampering, or normal wear and tear as determined by **EarthWay**. **EarthWay** at its discretion may require that the part(s) or product be returned along with the original purchase receipt at owners' expense for examination and compliance with the terms of this warranty. (Do not return any product without first receiving authorization from **EarthWay** Products, Inc.). To seek remedy under this warranty, contact **EarthWay** Products, Inc. at 574-848-7491, techsupport@earthway.com or write to (**EarthWay** Products, Inc. P.O. Box 547 Bristol, Indiana 46507) and describe the nature of the manufacturing defect. **SPECIFIC LIMITATIONS:** This warranty covers only the part(s) or product; any labor charges associated with repair or replacement of non-conformances are specifically excluded. Due to the corrosive nature of most fertilizers and ice melt products, **EarthWay** Products, Inc. makes no warranty against and specifically excludes part(s) or product degradation or failure due to corrosion or its effects. Clean and dry your spreader thoroughly after each use, as a preventative measure, coat all metal parts with a light oil or silicon spray.

OPERATING INSTRUCTIONS

Before filling hopper, become familiar with the operation of this spreader.

- Obtain proper setting for material to be used from the enclosed SETTING MATRIX included with this spreader, or from our web site under the MANUALS SECTION.
- Move stop bolt on rate gauge assembly to the proper setting.
- While pushing spreader forward, pull control lever back to stop bolt.
- To stop, push lever forward to close flow holes before you stop moving.
- When finished, empty any remaining material from hopper.
- Thoroughly wash spreader and allow to dry before storing. A coating of light oil will help prevent corrosion.
- If you must use Rock Salt, Remove agitator when using Rock Salt to prevent damage to the gearbox.

EarthWay Products, Inc.
1009 Maple Street, PO Box 547
Bristol, IN 46507

For Your Records

Date Purchased

Place of Purchase

HOW TO ORDER SPARE PARTS

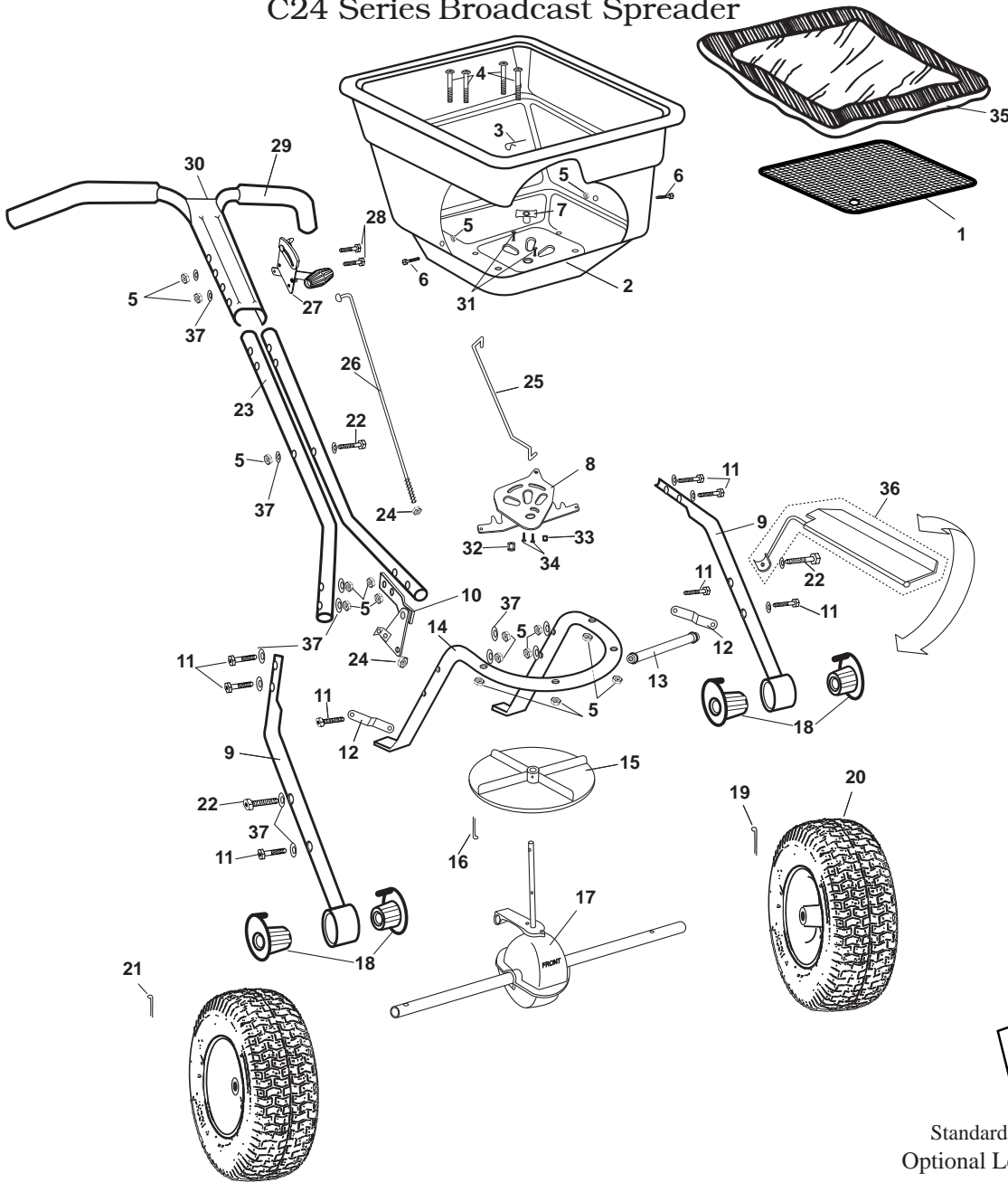
All spare parts listed may be ordered direct from
EarthWay Products, Inc.

Be sure to give the following information when ordering.

Model Number
Part Number
Part Description

Call (574) 848-7491, 800-294-0671, or email: parts@earthway.com
for current prices.

C24 Series Broadcast Spreader



EarthWay Products, Inc.

P.O. Box 547
Bristol, Indiana 46507
(574) 848-7491

60166R



Standard Settings (12196) Gauge Overlay and
Optional Lesco Settings (12195) Gauge Overlay

C24HD PROFESSIONAL BROADCAST SPREADER

Key #	Part #	Description	Key #	Part #	Description	Key #	Part #	Description
1	40003	Screen	14	25102	Frame C24HD	27	60298	Gauge & Lever Assembly
2	60219	Hopper Assembly, Includes Key #7 & 8	15	12109	Impeller	28	36207	1/4-20 X 2-3/4" Bolt
3	33117	Agitator	16	36105	1/8" X 1-1/4" Cotter Pin	29	12273	Handle Grip
4	36214	1/4-20 X 1-1/2" PHPMS SS	17	60334	Gear Box & Axle Assembly	30	60069	Upper Handle Assembly C24HD W/Grip
5	36300	1/4-20 NYLON Locknut	18	12352	New Axle Bearing	31	36208	#6 X 3/8" Type 25 PHPS SS
6	36210	1/4-20 X 1" Bolt	19	36103	3/16" X 2" Cotter Pin	32	11927	Larger Shut-Off Support
7	12209	Hopper Bushing	20	19117	Drive Wheel /Coast Wheel	33	11926	Small Shut-Off Support
8	12278	New Pro Shut-Off Plate	21	36104	3/16" X 1" Cotter Pin	34	31138	#8 X 3/8" PMT HD
9	25202	Lower Handle C24HD Painted	22	36205	1/4-20 X 2-3/4" Bolt	35	77002	Optional Heavy Duty Rain Cover
10	60299	Pivot & Bracket Assembly	23	25301	Handle Shaft C24HD	36	60060R	Optional Heavy Duty Rain Cover & Side Deflector Kit
11	36200	1/4-20 X 1-1/2" Bolt	24	36305	1/4-20 Hex Nut	37	36404	1/4" Cupped Washer Stainless Steel
12	42237	Frame Brace	25	44251	Pivot Rod		60166R	Optional Salt Deflector kit
13	24704	Cross Brace	26	42256	Control Rod			